

Security Countertop Kiosk & POS Stand for iPad

Installation Instructions



Unpacking

- Carefully remove the contents and lay them out on cardboard or other protective surface
- Check package contents against the parts list to ensure that all components were received and undamaged. Do not use damaged or defective parts
- Carefully read all instructions before attempting the installation

Safety Information

- Use proper safety equipment during installation
- If you don't understand the installation instructions, please consult an installation specialist
- This stand contains small parts which can act as a choking hazard if swallowed
- Do not use this product for any purpose or in any configuration not explicitly specified in these instructions

Tools Required

- Phillips screwdriver
- Electric drill, 3/16" drill bit and 3/8" masonry drill bit for permanent wood or concrete/brick installation respectively

Parts List



A - (1x) iPad Holder



B - (1x) Support Pole



C - (1x) Weighted Base



D - (4x) Rubber Pad



E - (1x) Decorative Cover



F - (2x) Screw



G - (2x) Concrete Anchor



H - (2x) Key



I - (4x) M5x6 Bolt



J - (4x) M8x20 Bolt



K - (1x) 4mm Allen Key



L - (1x) 5mm Allen Key



M - (1x) Plastic Button



(2x) 5mm Foam Pad

Installation

Step 1 - Mount the Rubber Pads to the Weighted Base

1. Turn the weight base so that the countersunk holes are facing up.
2. Remove the adhesive protection from the **Rubber Pads (D)**.
3. Mount the **Rubber Pads (D)** onto the weighted base, see **Figure 1**.

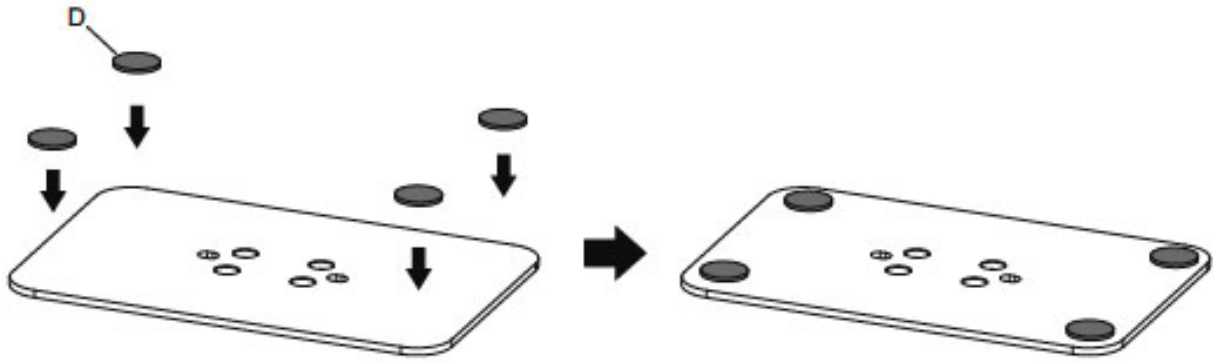


Figure 1

Step 2 - Mount the Support Pole to the Weighted Base

1. Install the **Decorative Cover (E)** and **Support Pole (B)** to the **Weighted Base (C)**, secure them using **M8x20 Bolt (J)**, tighten each bolt with **Allen Key (L)** by turning it clockwise until fully tight, see **Figure 2**.

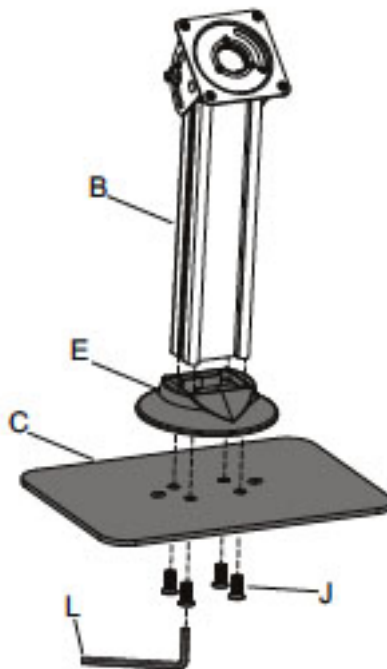


Figure 2

Step 3 - Mounting to the Countertop

3A) Weighted Base Installation

Simply place the stand directly onto the countertop.

The weighted base will secure the stand, see **Figure 3A**.

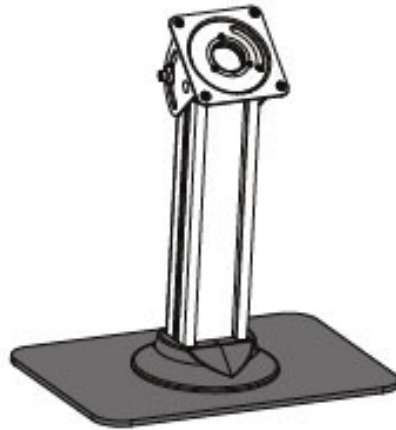


Figure 3A

3B) Permanent Wood Countertop Installation

1. Place the stand in the desired position. Lift up the decorative cover and mark the left and right positions of the mounting holes, see **Figure 3B**.
2. Remove the stand.
3. Next, pre-drill a 3/16" hole to a depth of approximately 2.2" into the wood countertop at each marked location.
4. Move the stand back onto the countertop and line up the mounting holes with the drilled holes.
5. For each location, insert **Screw (F)** into the wood countertop. Tighten each screw with a Phillips screwdriver by turning it clockwise until fully tight.
6. Lower the decorative cover to its original position.

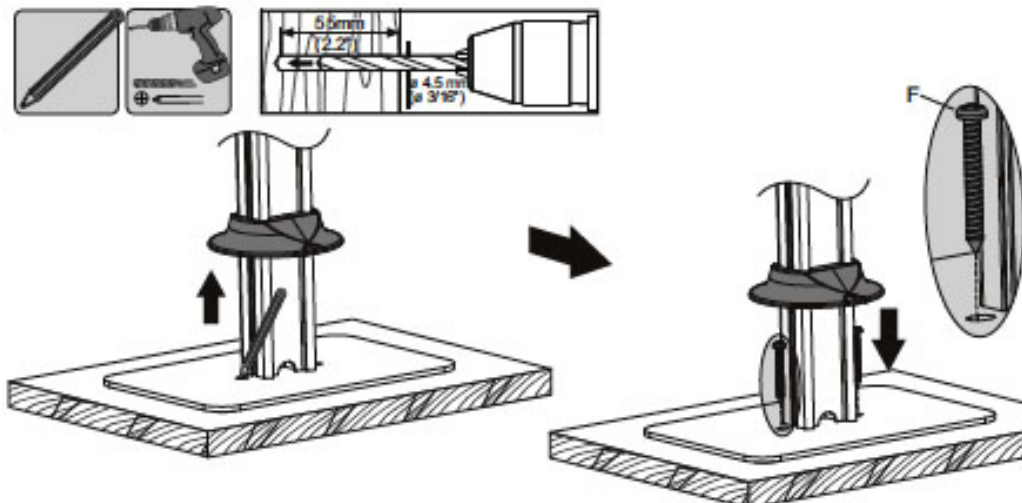


Figure 3B

3C) Permanent Concrete/Brick Countertop Installation

1. Place the stand in the desired position. Lift up the decorative cover and mark the left and right positions of the mounting holes, see **Figure 3C**.
2. Remove the stand.
3. Drill holes using an electric drill and a 3/8" masonry drill bit to a depth of approximately 2.4" into the concrete/brick countertop at each marked location.
4. Insert a **Concrete Anchor (G)** into each drilled hole. If necessary, a hammer can be used to lightly tap each concrete anchor into place so that they are flush with the countertop.
5. Once all of the concrete anchors are in place, move the stand back onto the countertop and line up the mounting holes with the drilled holes.
6. For each location, insert **Screw (F)** into the concrete anchor. Tighten each screw with a Phillips screwdriver by turning it clockwise until fully tight.
7. Lower the decorative cover to its original position.

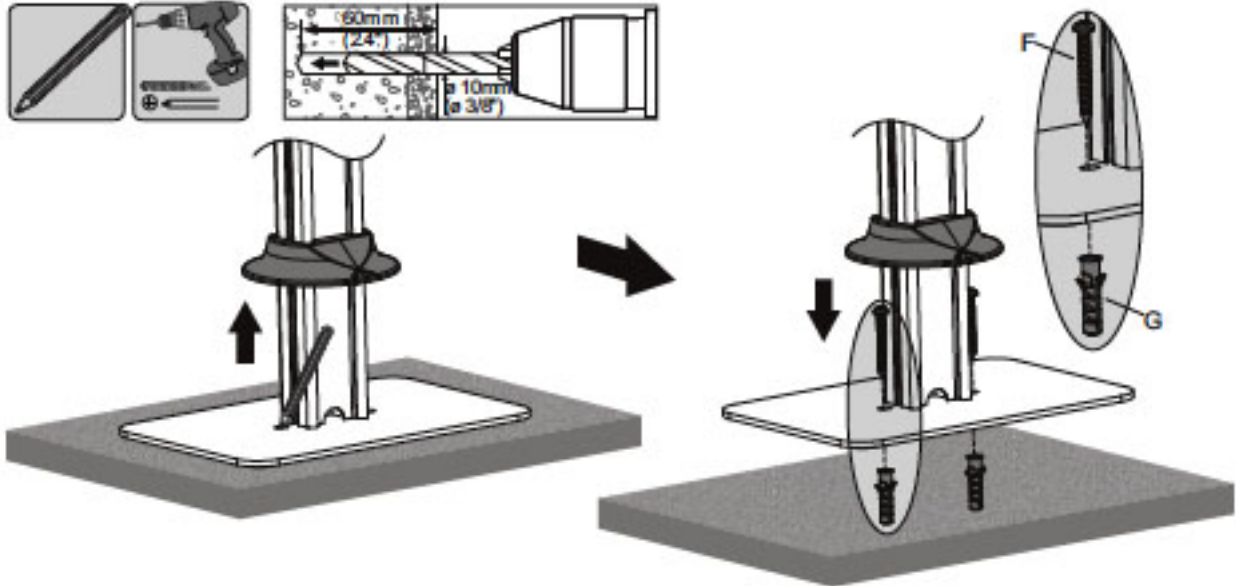


Figure 3C

Step 4 - Mounting the iPad Holder

1. If the cover is locked to the holder, insert **Key (H)** into the security lock and turn it counterclockwise to unlock, then remove the cover, see **Figure 4A**.
2. Place the holder so that the security lock is on the top.
3. Secure the holder to the support pole using **M5x6 Bolt (I)**, see **Figure 4B**.
4. Tighten each bolt with a Phillips screwdriver by turning it clockwise until fully tight.

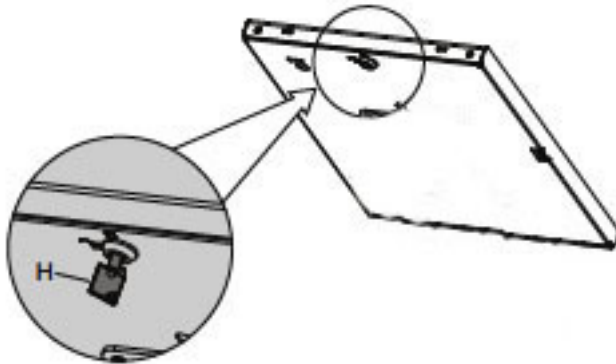


Figure 4A

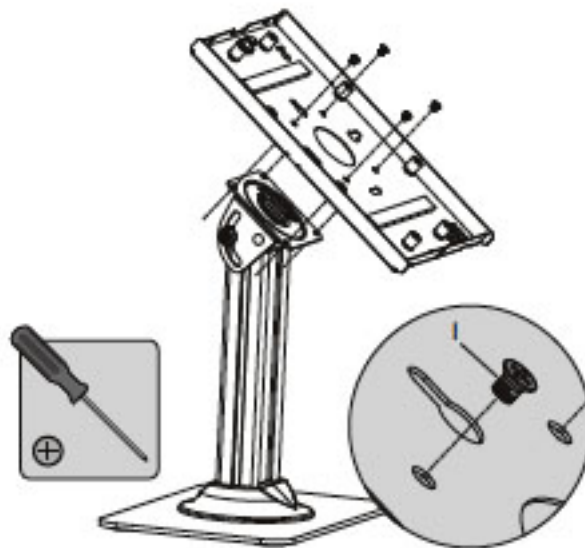


Figure 4B

Step 5 - Arranging the iPad Mount

5A) For iPad 2 / 3 / 4

The Silicon Posts come pre-configured to fit iPad 2 / 3 / 4 models. No adjustment is needed for use with these iPad models.

1. Replace the currently mounted 7mm Foam Pads with the included 5mm Foam Pads, see **Figure 5A**.

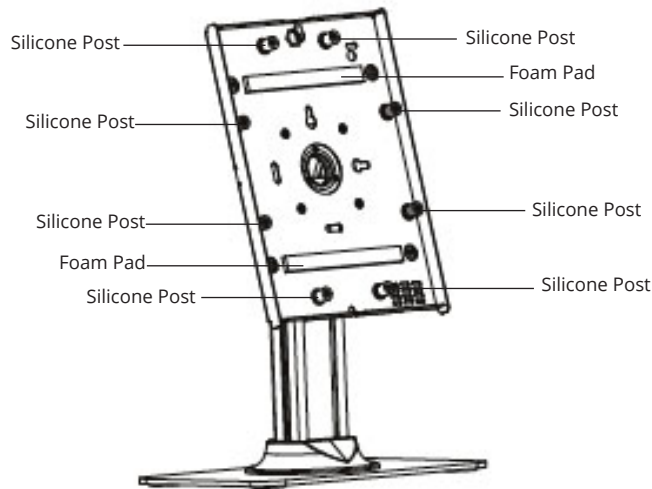


Figure 5A

5B) For iPad Air / Air 2

1. Remove the Silicone Posts from their original positions, see **Figure 5B-1**.
2. Install the Silicone Posts at the positions shown, see **Figure 5B-2** and **Figure 5B-3**.

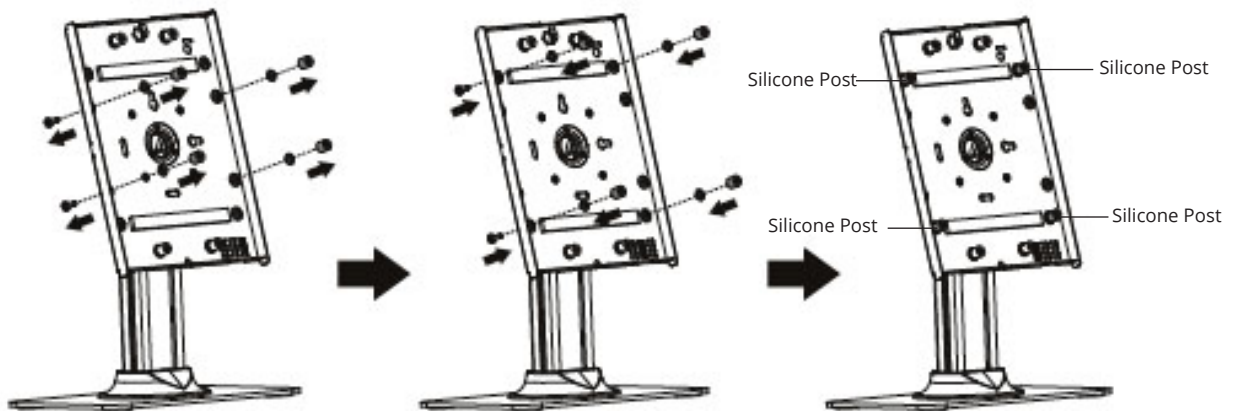


Figure 5B-1

Figure 5B-2

Figure 5B-3

Step 6 - Installing iPad

1. Place your iPad into the holder so that it rests on the foam pads and is supported by the Silicon Posts.
2. Connect the iPad's charging cable and route the cable through the cable management slot, see **Figure 6**.

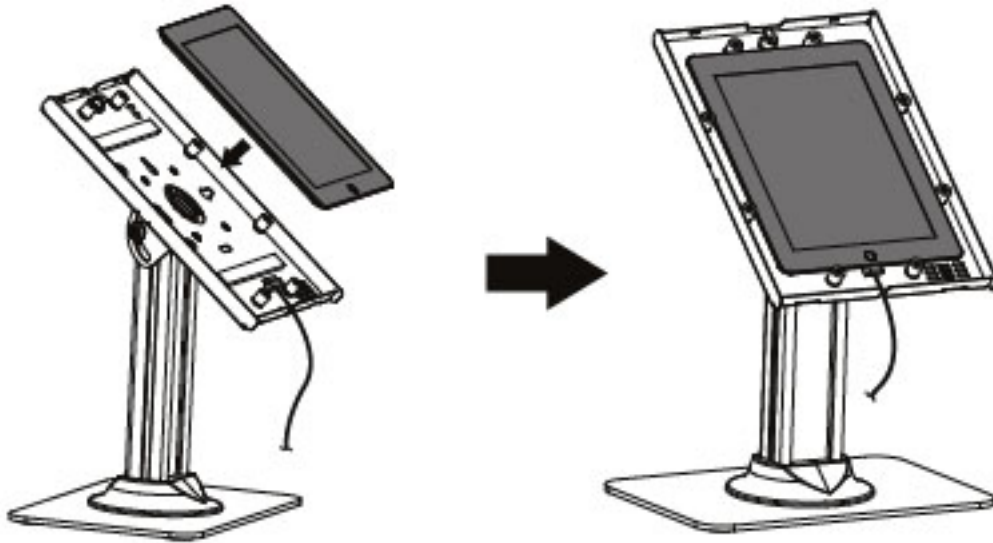


Figure 6

Step 7 - Installing the Cover onto the iPad Holder

1. Insert the **Key (H)** into the lock, turn it counterclockwise to unlock, see **Figure 7**.
2. Align the slots on the bottom of the cover to the openings in the bottom of the holder, then pivot the cover onto the holder, see **Figure 8**.
3. Turn the key clockwise to secure the cover to the holder, remove the key from the lock.

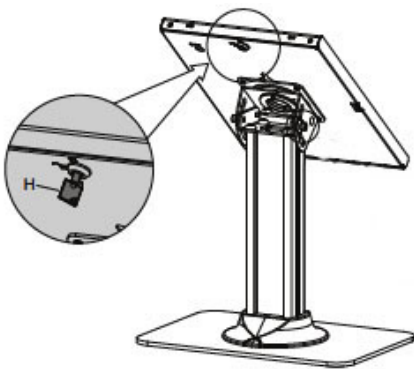


Figure 7

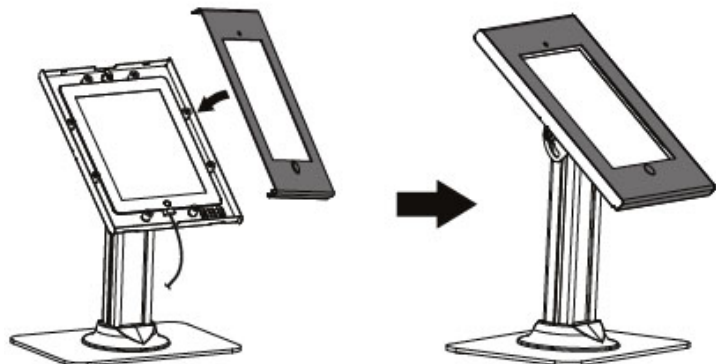


Figure 8

Step 8 - Final Adjustments

Tilt Angle Adjustment

1. Adjust the tightness of tilt angle using **4mm Allen Key (K)**, see **Figure 9**.

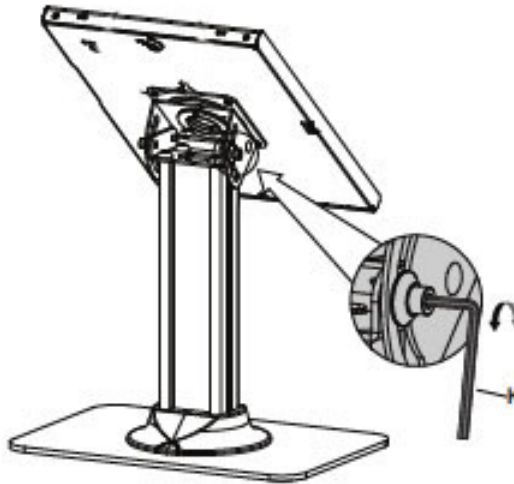


Figure 9

Rotation Adjustment (Optional)

1. Remove the iPad from the holder.
2. Using a Phillips screwdriver, turn the screws clockwise to tighten and counterclockwise to loosen, see **Figure 10**.

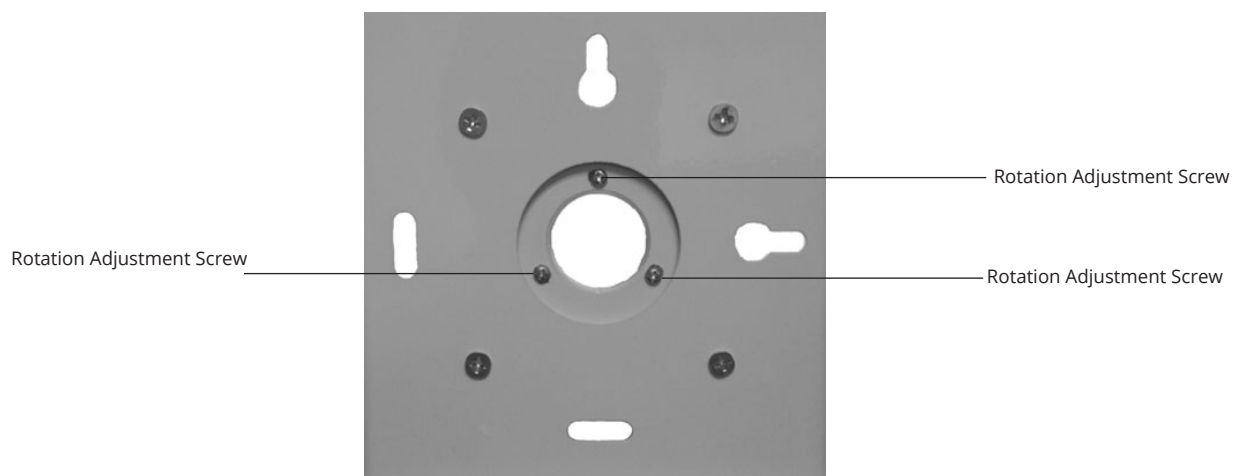


Figure 10

Disable the Home Button

1. Remove the iPad Holder's cover.
2. Remove the Silicone button from the cover.
3. Insert the the **Plastic Button (M)** into the opening, see **Figure 11**.
4. Reinstall the cover and lock it in place.

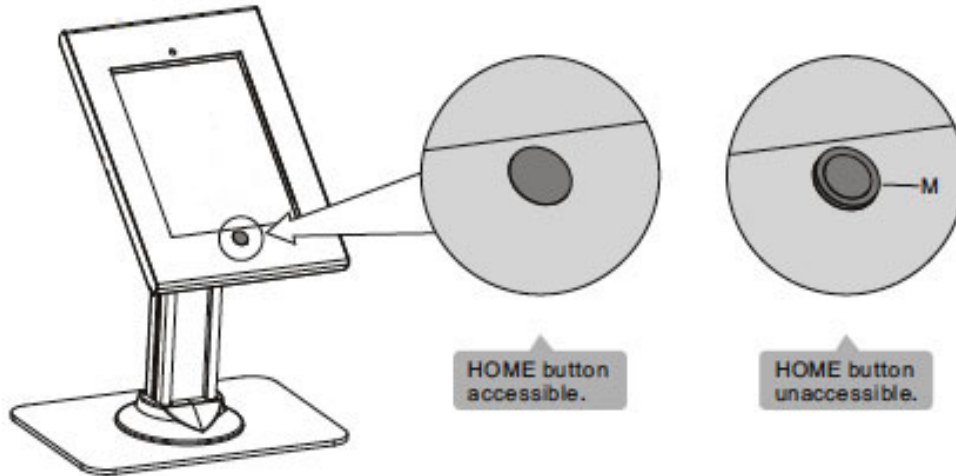


Figure 11

Viewing Angle Adjustment

This stand allows tilt viewing angle of 0 to -75 degrees and rotation viewing angle of 0 to 90 degrees, see **Figure 12**.

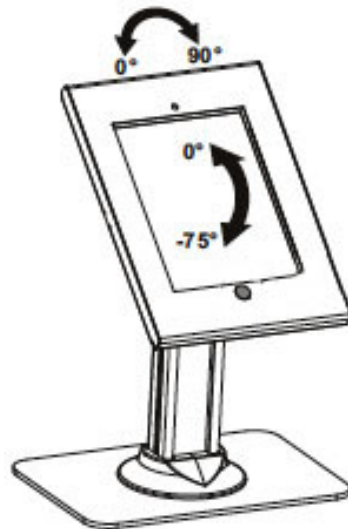


Figure 12

Maintenance

Check the mounting hardware every two months for tightness.

Blank Page

Technical Support and Warranty

QUESTIONS? SIIG's **Online Support** has answers! Simply visit our web site at www.siig.com and click **Support**. Our online support database is updated daily with new drivers and solutions. Answers to your questions could be just a few clicks away. You can also submit questions online and a technical support analyst will promptly respond.

SIIG offers a 5-year manufacturer warranty with this product. This warranty covers the original purchaser and guarantees the product to be free of any defects in materials or workmanship for five (5) years from the date of purchase of the product. This warranty is not transferable and is available only to the original purchaser of the product.

SIIG will, at our discretion, repair or replace (with an identical product or product having similar features and functionality) the product if defective in materials or workmanship. This warranty gives you specific legal rights, and you may also have other rights which vary from state to state. Please see our web site for more warranty details.

If you encounter any problems with this product, please follow the procedures below.

- A) If it is within the store's return policy period, please return the product to the store where you purchased it.
- B) If your purchase has passed the store's return policy period, please follow these steps to have the product repaired or replaced.

Step 1: Submit your RMA request. Go to www.siig.com, click **Support**, then **Request A Product Replacement** to submit a request to [SIIG RMA](#) or fax a request to 510-657-5962. Your RMA request will be processed, if the product is determined to be defective, an RMA number will be issued.

Step 2: After obtaining an RMA number, ship the product.

- Properly pack the product for shipping. All software, cable(s) and any other accessories that came with the original package must be included
- Include a copy of your original sales receipt inside the package with the date of purchase and place of purchase circled and clearly visible
- Clearly write your RMA number on the top of the returned package. SIIG will refuse to accept any shipping package, and will not be responsible for a product returned without an RMA number posted on the outside of the shipping carton
- You are responsible for the cost of shipping to SIIG. Ship the product to the following address:

SIIG, Inc.
6078 Stewart Avenue
Fremont, CA 94538-3152, USA
RMA #: _____

- SIIG will ship the repaired or replaced product via Ground in the U.S. and International Economy outside of the U.S. at no cost to the customer

About SIIG, Inc.

Founded in 1985, SIIG, Inc. is a leading manufacturer of IT connectivity solutions (including Serial ATA and Ultra ATA Controllers, FireWire, USB, and legacy I/O adapters) that bridge the connection between Desktop/Notebook systems and external peripherals. SIIG continues to grow by adding A/V and Digital Signage connectivity solutions to our extensive portfolio. All centered around the distribution and switching of A/V signals over CAT5/6, these products include matrix switches, distribution amplifiers, extenders, converters, splitters, cabling, and more.

SIIG is the premier one-stop source of upgrades and is committed to providing high quality products while keeping economical and competitive prices. High-quality control standards are evident by one of the lowest defective return rates in the industry. Our products offer comprehensive user manuals, user-friendly features and are backed by an extensive manufacturer warranty.

SIIG products can be found in many computer retail stores, mail order catalogs, and e-commerce sites in the Americas, as well as through major distributors, system integrators, and VARs.

PRODUCT NAME

Security Countertop Kiosk & POS Stand for iPad
--

Security Countertop Kiosk & POS Stand for iPad is a trademark of SIIG, Inc. SIIG and the SIIG logo are registered trademarks of SIIG, Inc. All other names used in this publication are for identification only and may be trademarks of their respective owners.