



# Wireless USB to HDMI with Audio Kit Installation Guide

## **Introduction**

---

The *Wireless USB to HDMI with Audio Kit* adds an HDMI port to your USB enabled system.

## **Key Features and Benefits**

- Up to 10 meters wireless connection, no more cable clutter
- Supports 720p HD video and digital stereo sound
- Supports mirror and extended mode
- Supports 1080P for still image
- Supports mirror mode and extended mode
- Auto pairing feature
- Easy installation software

## **System Requirements**

- PC computer with an available USB port

- Windows8®(32-/64-bit) / 7(32-/64-bit)/ Vista(32-/64-bit) / XP(32-bit)
- Mac OS 10.4 to 10.8

## Package Contents

- Wireless USB to HDMI receiver
- Wireless USB transmitter
- HDMI cable
- AC power adapter
- Driver CD & installation guide

## Layout

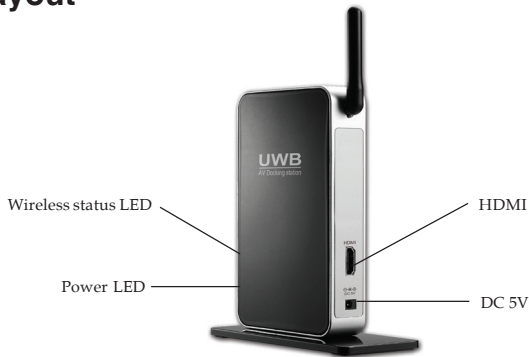


Figure 1: Layout

- Wireless status LED: Steady yellow light when the wireless USB transmitter is connected to your system
- Power LED: Steady blue light when power adapter is connected to a reliable power source
- HDMI: Connect the HDMI port with your second monitor by using the included HDMI cable
- DC 5V: Connect the power adapter here

## **Hardware Installation**

---

1. Plug the power adapter to the *Wireless USB to HDMI with Audio Kit's* DC 5V power connector, then connect the other end to a reliable power source.
2. Connect the HDMI cable to the *Wireless USB to HDMI with Audio Kit's* HDMI port, and connect the other end to your second monitor.
3. The *Wireless USB to HDMI with Audio Kit* is ready for use now.

## Windows Software Installation

---

Make sure the proper driver for your graphics card is installed, the *Wireless USB to HDMI with Audio Kit* is not designed to work with Windows' **Standard VGA Graphics Adapter** driver.


**Important:** Follow the instructions below to install the driver. Do not plug the *Wireless USB to HDMI with Audio Kit* into the computer until instructed to do so.

1. Insert the driver CD.
2. Double click **Setup** at the autoplay CD driver window, or press **Windows** key and **R**, type **D:\Setup.exe** in the Run window, then click **OK**. (Change D: to match your CD/DVD-ROM drive letter)
3. Click **Yes** or **Allow** at the User Account Control. Skip this step if not prompted.
4. Connect your second monitor to the *Wireless USB to HDMI with Audio Kit* and turn it on, then plug the *Wireless USB to HDMI with Audio Kit* into the computer.
5. Restart the computer.

## To Verify Windows Installation

1. Go to Device Manager to verify installation.  
*For Window 8 / Windows 7 / Windows XP:* Right click **Computer** or **My Computer**, click **Manage**, then click **Device Manager**.  
*For Windows Vista:* Right click **Computer**, click **Manage**, click **Continue**, then click **Device Manager**.
2. Double click **USB Display Adapters**, a **WUSB Audio/Video Device** should be displayed.

## Windows Display Utility

After successful driver installation a **WUSB Audio/Video Device** utility icon  will appear in the taskbar. This display utility allows you to quickly change the viewing modes and resolutions. Access the utility by clicking the icon. See **Figure 2**.

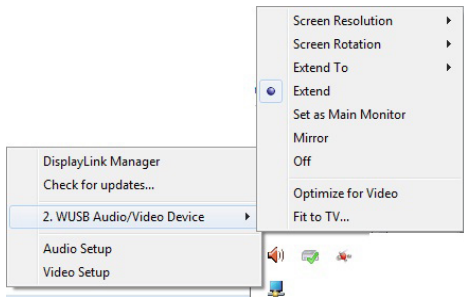


Figure 2

- **DisplayLink Manager: View Windows Display Properties.**
- **Check for updates (Windows 8 / 7 only):** Connects to the update server to check for newer driver versions and download them if available.
- **Audio Setup: View Windows Sound Properties.**
- **Video Setup: View Windows Display Settings.**
- **Screen Resolution: Displays a list of available resolutions.**

- **Screen Rotation:**

*Normal* - No rotation is applied.

*Rotated Left* - Rotates the extended or mirrored display by 270 degrees.

*Rotated Right* - Rotates the extended or mirrored display by 90 degrees.

*Upside-Down* - Rotates the extended or mirrored display by 180 degrees.

- **Extend to:**

*Right* - Extends the display to the right of the main display.

*Left* - Extends the display to the left of the main display.

*Above* - Extends the display above of the main display.

*Below* - Extends the display below the main display.

- **Extend (Default setting):** This mode extends your desktop for easy viewing of multiple windows. Windows will move off the primary display and enter the extended display.

- **Set as Main Monitor:** Makes the *Wireless USB to HDMI with Audio Kit* the main display adapter in the system. Before selecting this option, right click anywhere on the desktop, click **View**, click **Auto Arrange** to allow your desktop icons to move to the new main display automatically. **Note:** Without enabling Auto Arrange, you will be required to drag-n-drop your desktop icons to the new display.

**IMPORTANT:** In Windows XP, set the *Wireless USB to HDMI with Audio Kit* to **Off** before selecting **Set as Main Monitor**.

- **Mirror:** The *Wireless USB to HDMI with Audio Kit* will mirror your desktop. You will see the same image on both monitors.
- **Off:** This setting turns off the *Wireless USB to HDMI with Audio Kit*.
- **Optimize for Video (Not applicable in Windows XP):** Configures the secondary display for optimum full screen video performance output. **Note:** Text may appear less clear.



- **Fit to TV:** Opens a GUI to change the size of the Windows desktop so it fits on a TV screen.

## Windows Display Settings

Instead of using the **WUSB Audio/Video Device** utility, you can use the embedded Windows Display Properties (WDP) to change the display settings.

*For Windows 8 / 7 / XP:* Right click anywhere on Windows desktop, select **Screen Resolution** or **Properties**.

*For Windows Vista:* Right click anywhere on Windows desktop, select **Personalize**, then **Display Settings**.

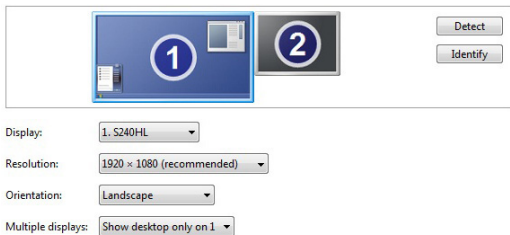


Figure 3

**Note:** Not all the WDP functions are available under Windows Vista.

- **Display:** Use the drop down list to select a display to be configured.
- **Resolution:** Use the drop down list and use the slider to choose a resolution.
- **Orientation:**
  - Landscape* - Sets the display to landscape view.
  - Portrait* - Sets the display to portrait mode.
  - Landscape (flipped)* - Sets the display to upside down landscape mode.
  - Portrait (flipped)* - Sets the display to upside down landscape mode.
- **Multiple displays:**
  - Duplicates these displays* - Reproduces the main display on the second display.
  - Extend these displays* - Extends the main display onto the secondary display.
  - Show Desktop only on 1* - The desktop appears on the display marked 1. The display marked 2 becomes blank.

*Shows Desktop only on 2* - The desktop appears on the display marked 2. The display marked 1 becomes blank.

- **Make this my main display:** Check the box to make your *Wireless USB to HDMI* the main display. Ensure the secondary monitor is selected before choosing this option.

## Display Positions

To move the position of a display, click and hold the display you wish to move then drag it to the desired position. The display will be highlighted with a blue border while you are moving the display to its new position.

## **Windows Software Uninstallation**

### Windows 8 / 7 / Vista

1. Click **Start, Control Panel**.
2. Click **Programs** or **Classic View**.
3. Click **Programs and Features**.
4. Select **DisplayLink Graphics**, click **Uninstall**, then follow the on-screen instructions to uninstall the driver.

## Windows XP

1. Click **Start, Control Panel**.
2. Double click **Add/Remove Programs**.
3. Select **DisplayLink Graphics**, click **Remove**, then click **Yes**.
4. Click **Yes** again to complete uninstalling the driver.

## Mac OS Driver Installation

---

1. Connect your second monitor to the *Wireless USB to HDMI* and turn it on, then plug the *Wireless USB transmitter* to a USB port.
2. Insert driver CD.
3. Double click **Driver** CD icon on the Desktop.
4. For Mac 10.4-10.5: Double click **Mac OS X 10.4-10.5** folder, then double click **DisplayLink\_Installer\_1.7.dmg**  
For Mac 10.6-10.8: Double click **Mac OS X 10.6-10.8** folder, then double click **DisplayLink\_Installer\_V2.0.dmg**
5. At the DisplayLink Installer, double click **DisplayLink Software Installer.pkg**
6. At Introduction, click **Continue**.

7. At License, click **Continue**, then click **Agree**.
8. For MAC OS 10.4.x, click **Continue** at the Select Destination.  
For MAC OS 10.5.x or later, skip this step.
9. At Installation Type, click **Change Install Location** if you want to change the default saving folder; otherwise, click **Install** or **Upgrade**.
10. Type in Name and Password, click **OK** or **Install Software**, then click **Continue Installation**.
11. Click **Restart** to complete the installation.

## **To Verify Driver Installation**

1. Go to **System/Library/Extensions** folder.
2. If both files **DisplayLink Driver.kext** and **DisplayLinkGA.plugin** are in the **Extension** folder, the *Wireless USB to HDMI with Audio Kit* is installed successfully.

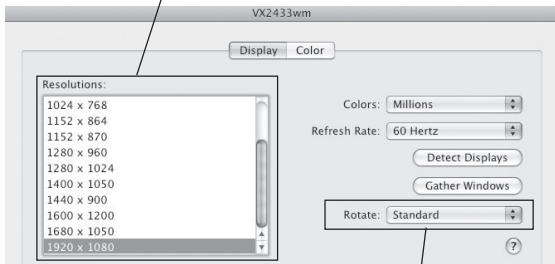
## Mac Display Utility

Access the display utility menu by clicking the display icon in the taskbar, and select **Display Preferences**. Or you can go to **System Preferences** and click **Displays**.

### Setting the Display Resolutions

Select an available resolution from the Display Preferences window. The resolutions available depend on both the *Wireless USB to HDMI with Audio Kit* and the capabilities of the connected display.

Select from the Resolution drop down list to change the display resolution



Select from the Rotate drop down list if you want to rotate your display.

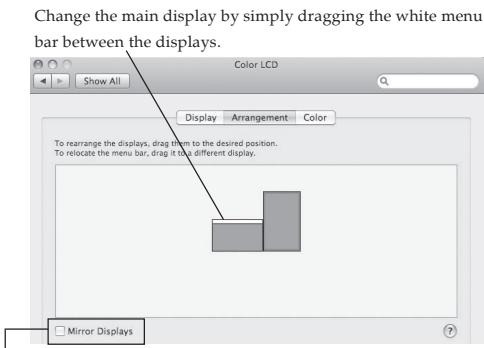
**Figure 4**

## Rotating a Display

Configure the orientation using the **Rotate** drop down, see **Figure 4**. Select the appropriate angle of rotation to match your display's set up.

## Setting the Display to Mirror/Extend Mode

Check the **Mirror Displays** box on the **Arrangement** pane to enable the mirror mode. See **Figure 5**. Uncheck the box to set the display to extended mode.



Check the Mirror Displays box to enable the mirror mode;  
uncheck it to go back to the default setting (extend mode).

**Figure 5**

## Changing the Main Display

As **Figure 5**, you can change the main display by moving the Menu Bar between displays.

## **Mac OS Driver Uninstallation**

1. Insert the driver CD.
2. Double click **Driver** CD icon on the Desktop.
3. *For Mac 10.4-10.5:* Double click **Mac OS X 10.4-10.5** folder.  
*For Mac 10.6-10.8:* Double click **Mac OS X 10.6-10.8** folder.
4. Double click **displaylink\_Installer\_x.x.dmg**.
5. Double click **DisplayLink Software Uninstaller**, then Select **Uninstall**.
7. Type in the password, then click **OK**.
8. Click **Restart** to complete uninstallation.



# Application

---



**Figure 6**

## Frequently Asked Questions

---

- Q1: Why is there no image displayed on the extended monitor after the driver is installed?
- A1: Make sure you already restarted your computer after driver installation. Then unplug the HDMI cable and the *Wireless USB transmitter* and replug them again to see if the *Wireless USB to HDMI with Audio Kit* works properly.
- Q2: Why won't my DVD player work when I move it over to the extended display?
- A2: Some DVD playback software packages do not support playing on a second display adapter.
- Q3: How come my open window will not move over to the extended display?
- A3: Restore down the open window before moving it over to the extended display, also make sure the open window is moved completely over onto the extended display.

# Technical Support and Warranty

---

**QUESTIONS?** SIIG's **Online Support** has answers! Simply visit our web site at [www.siig.com](http://www.siig.com) and click **Support**. Our online support database is updated daily with new drivers and solutions. Answers to your questions could be just a few clicks away. You can also submit questions online and a technical support analyst will promptly respond.

SIIG offers a 3-year manufacturer warranty with this product. This warranty covers the original purchaser and guarantees the product to be free of any defects in materials or workmanship for three (3) years from the date of purchase of the product.

SIIG will, at our discretion, repair or replace (with an identical product or product having similar features and functionality) the product if defective in materials or workmanship. This warranty gives you specific legal rights, and you may also have other rights which vary from state to state. Please see our web site for more warranty details.

If you encounter any problems with this product, please follow the procedures below.

A) If it is within the store's return policy period, please return the product to the store where you purchased from.

B) If your purchase has passed the store's return policy period, please follow the steps below to have the product repaired or replaced.

**Step 1:** Submit your RMA request.

Go to [www.siig.com](http://www.siig.com), click **Support**, then **REQUEST A PRODUCT REPLACEMENT** to submit a request to [SIIG RMA](#) or fax a request to 510-657-5962. Your RMA request will be processed, if the product is determined to be defective, an RMA number will be issued.

**Step 2:** After obtaining an RMA number, ship the product.

- Properly pack the product for shipping. All accessories that came with the original package must be included.
- Clearly write your RMA number on the top of the returned package. SIIG will refuse to accept any shipping package, and will not be responsible for a product returned without an RMA number posted on the outside of the shipping carton.
- You are responsible for the cost of shipping to SIIG. Ship the product to the following address:

**SIIG, Inc.**

**6078 Stewart Avenue**

**Fremont, CA 94538-3152, USA**

**RMA #:** \_\_\_\_\_

- SIIG will ship the repaired or replaced product via Ground in the U.S. and International Economy outside of the U.S. at no cost to the customer.

## About SIIG, Inc.

---

Founded in 1985, SIIG, Inc. is a leading manufacturer of IT connectivity solutions (including Serial ATA and Ultra ATA Controllers, FireWire, USB, and legacy I/O adapters) that bridge the connection between Desktop/ Notebook systems and external peripherals. SIIG continues to grow by adding A/V and Digital Signage connectivity solutions to our extensive portfolio. SIIG products offer comprehensive user manuals, many user-friendly features, and are backed by an extensive manufacturer warranty. High quality control standards are evident by the overall ease of installation and compatibility of our products, as well as one of the lowest defective return rates in the industry. SIIG products can be found in computer retail stores, mail order catalogs, through major distributors, system integrators, and VARs in the Americas and the UK, and through e-commerce sites.

### **PRODUCT NAME**

Wireless USB to HDMI with Audio Kit

**FCC RULES: TESTED TO COMPLY WITH FCC PART 15, CLASS B  
OPERATING ENVIRONMENT: FOR HOME OR OFFICE USE**

### **FCC COMPLIANCE STATEMENT:**

This device complies with part 15 of the FCC Rules. Operation is subject to the following two conditions: (1) This device may not cause harmful interference, and (2) this device must accept any interference received, including interference that may cause undesired operation.

### **THE PARTY RESPONSIBLE FOR PRODUCT COMPLIANCE**

SIIG, Inc.  
6078 Stewart Avenue  
Fremont, CA 94538-3152, USA  
Phone: 510-657-8688

Wireless USB to HDMI with Audio Kit is a trademark of SIIG, Inc. SIIG and the SIIG logo are registered trademarks of SIIG, Inc. Microsoft and Windows are registered trademarks of Microsoft Corporation. All other names used in this publication are for identification only and may be trademarks of their respective owners.

February, 2014

Copyright © 2014 by SIIG, Inc. All rights reserved.